

## ANALYSIS OF REPAIRED GAS TURBINE AND COMPRESSOR BLADES

Alexander Tishkunov <sup>1</sup>, Sergejs Gluhihs <sup>2</sup>, Aleksandrs Korjakins, Andris Popovs

*Institute of Materials and Structures of Riga Technical University,  
Azenes st. 16-323, LV-1048, Riga, Latvia  
E-mails: <sup>1</sup>alex\_ti@inbox.lv; <sup>2</sup>s\_gluhih@inbox.lv*

*Received 20 March 2008; accepted 31 March 2008*



**Alexander TISHKUNOV**

*Date, place of birth:* 31.05.86; Riga, Latvia.

*Education:* 2nd course bachelor student of RTU (faculty of building and civil engineering).

*Experience:* 2006 – present - junior researcher, Institute of Materials and Structures, Riga Technical University.

*Field of research:* strength of structures, computer analysis of structures.



**Sergejs GLUHIHS, Dr Sc eng**

*Date, place of birth:* March 11, 1953, Riga.

*Education:* 1976 – St. Petersburg Technical University, PhD in mechanical engineering.

*Experience:* 1976 – present - Institute of Materials and Structures, Riga Technical University.

*Publications:* Author of more than forty different scientific publications.

*Field of research:* strength and dynamics of structures, damping analysis, mechanics of composite materials, numerical methods and computer analysis of structures, strength of foam-rubber.



**Aleksandrs KORJAKINS**

*Date, place of birth:* 29. 01.1963 in Jekabpils, Latvia.

*Education:* 1980–1985 – graduate student at Riga Technical University, Faculty of Architecture and Civil Engineering. 1989–1992 – postgraduate student at Riga Technical University, specialty - Mechanics of Solids.

*Experience:* 1985 – engineer at Riga Technical University; 1993 – researcher; 1999 – docent; 2002 – Assoc Prof; 2006 – Prof at Riga Technical University.

*Publications:* Author of more than fifty different scientific publications.

*Field of research:* Fracture toughness of composites, strength of structures, damping and dynamic analysis of constructions, numerical methods and computer analysis of structures.



**Andris POPOVS, Dr Sc Eng**

*Date, place of birth:* 21.02.1944; Riga, Latvia.

*Education:* 1967 – Riga Aviation Institute (Faculty of Mechanics).

*Experience:* 1967–1999 – Riga Aviation Institute, Scientist.

1999 – present – Dr Sc Eng, Institute of Materials and Structures, Riga Technical University.

*Field of research:* fatigue and dynamics of structures, strength of structures, computer analysis of structures.

**Abstract.** In order to reach desired levels of efficiency and power output of jet engines, advanced gas turbine and compressor blades made from Ti-6AL-4V alloy operate at very high temperatures (up to 600°C) and speeds (up to 10000 rpm) [3–4]. Pressure of springing streams and inertial forces are main reasons of stress appearance in the blades. Besides that, blade usually could be out of action after one’s edges had become damaged under temperature or foreign object hit negative influence. High cycle fatigue (HCF) accounts for 56 % of major aircraft engine failures and ultimately limits the service life of most critical rotating components. Extensive inspection and maintenance programs have been developed to detect, renew and replace defected blades, to avoid catastrophic engine failure. Various modern technologies including laser cladding (filling layers of sprayed material) allow prolongation of blades’ life by damaged part’s renovation with alternate material. The general aim of the present work concludes of blades’ mechanical bahaviour comparison before and after renewal.

**Keywords:** turbine blade, compressor blade, modelling, streams, internal cooling, damage simulation, material change, Von Mises equivalent stress, displacements, experiment, result comparison.

## 1. Introduction

To solve the problem, separately have been researched two kinds of blades: compressor and turbine blades, which both are used as parts of differing aero jet engines (Figs 1, 2). On the occasion of that, the 3-Dimension parametric models of mentioned blades were created by SolidWorks software foundation using scanned and measuring information.

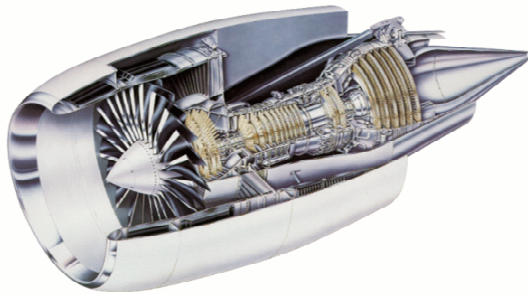


Fig 1. Turbine

analysis(FEM) Von Mises equivalent stresses and displacements for all overlooked models have been obtained.

## 2. Preparing for calculation and the experiment

To make certain about conformity of models and the original samples, the first calculation step included own frequency determination and their comparison with experimental results. An experimental frequency value responce had been received with the help of *Polytec PSV-400* laser vibrometer system before other analysis started. Its modular design allows the frequency, velocity and displacement capabilities to be tailored to specific or multiple applications. Both analogue and digital decoders are available, giving a frequency range from near DC to 20 MHz, with velocities to  $\pm 10$  m/s and displacements from the sub-nanometer to meter range. A vibrometer system is comprised of controller electronics and a non-contact standard-optic or fiber-optic sensor head. The controller provides signals and power for the sensor head, and processes the vibration signals. These are

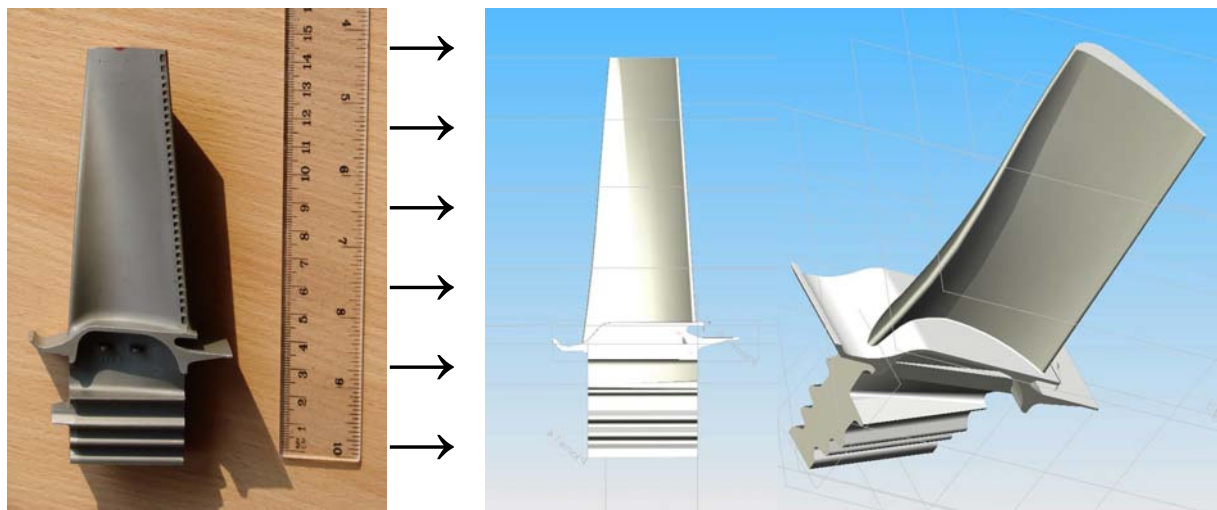


Fig 2. Turbine blade’s modeling

Original sampled and renewed blades’ mechanical behaviour comparison consisted of stress-strain state analysis for origin and repaired damage-simulated blades using SolidWorks and it’s integrated module CosmosWorks software [1]. As results of finite element

electronically converted by specially developed decoders within the controller to obtain velocity and displacement information about the test structure. This information is provided by OFV-5000 in either analog or digital form, for further data evaluation.

Data comparison of two most significant frequency values from experiment and Cosmos-Works calculations is shown in the figure 3.

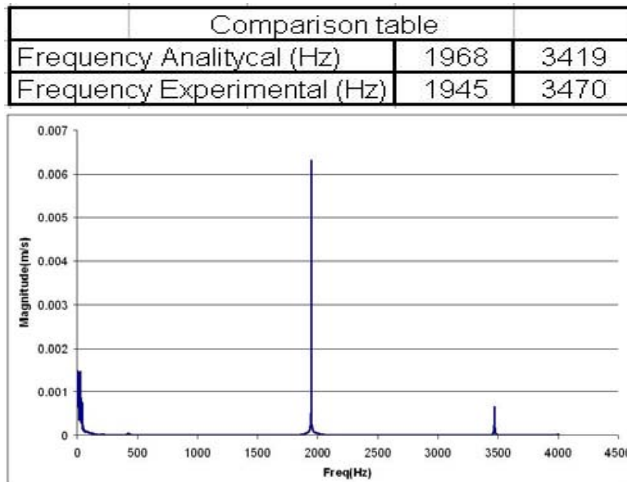


Fig 3. Frequency chart and value comparison table

The continuation of modeling was directed to possible blades' defects simulation [7]. Damaged side and upper edges for 5, 10, 15 millimeters and 5, 15, 30 millimeters accordingly, as also dents in frame were filled up with alternate material alloy - Inconel Alloy 718 [2]. Main differences between initial and welded alloys are focused on module of elasticity and thermal conductivity disparities are shown in the table [5–6]. Overlooked

Material properties

Ti-6AL-4V (basic material)		
Limiting:		
Ti ... Remainder	O ..... 0.20	V ..... 3.5/4.5
Fe ..... 0.40	Al .... 5.50 – 6.75	H .. max. 0.015
N ..... 0.05	C ..... 0.08	
Density,	lb/in <sup>3</sup> .....0.160	
	g/cm <sup>3</sup> .....4.43	
Melting range, approx.	°F.....3000	
	°C.....1648	
Beta transus,	°F +/- 25.....1784	
	°C +/- 4.....980	
Coefficient of expansion		
10-6 in/in·°F	32 – 212 °F.....5.0	32 – 1200 °F.....5.9
	32 – 600 °F.....5.3	32 – 1500 °F.....6.1
	32 – 1000 °F.....5.6	
µm/m·°C	0 – 100 °C 9.1	0 – 649 °C.....10.7
	0 – 316 °C 9.6	0 – 816 °C.....11.0
	0 – 538 °C 10.1	
Thermal conductivity,	Btu-in/ft <sup>2</sup> ·h·°F.....3.9	
	W/m·°C.....0.56	
Elasticity-tension modulus, 10 <sup>6</sup> psi.....16.5		
Elasticity-torsion modulus, 10 <sup>6</sup> psi.....6.1		
Specific heat,	Btu/lb·°F.....0.135	
	J/kg·°C.....(565.2)	
Annealing temp.,		
Full	°F .....1300 – 1525°/15 min., – 2 hrs, AC	
	°C .....704 – 838°/15 min., – 2 hrs, AC	
Stress relief	°F .....900 – 1200°/1 – 4 hrs, AC	
	°C .....495 – 659°/1 – 4 hrs, AC	
Forging temp.		
Blocking	°F.....1750 – 1800°	
	°C.....962 – 989°	
Finishing	°F.....1650 – 1750°	
	°C.....812 – 962°	

Table continued below

Inconel 718 (renovation material)

Limiting:		
Ni <sup>a</sup> .. 50.0 – 55.0	Ti .. 0.65 – 1.15	Si .... max. 0.35
Cr .. 17.0 – 21.0	Al .. 0.20 – 0.80	P ..... max. 0.015
Fe ... Remainder	Co <sup>c</sup> .. max. 1.00	S ..... max. 0.015
Nb <sup>b</sup> .. 4.75 – 5.50	C .... max. 0.08	B ..... max. 0.006
Mo .. 2.80 – 3.30	Mn .. max. 0.35	Cu ... max. 0.30
<sup>a</sup> Plus Co <sup>b</sup> Plus Ta	<sup>c</sup> if determined	
Density,	lb/in <sup>3</sup> .....0.296	
	g/cm <sup>3</sup> .....8.19	
Melting range,	°F.....2300 – 2437	
	°C.....1260 – 1336	
Specific heat,	Btu/lb·°F.....0.104	
	J/kg·°C.....435	
Curie Temperature,	°F.....-170	
	°C.....-112	
Permeability at 200 oersted (15.9kA/m).....1.0011		
Coefficient of expansion		
	70 – 200 °F, 10-6 in/in·°F.....7.2	
	21 – 93 °C, µm/m·°C.....13.0	
Thermal conductivity,	Btu-in/ft <sup>2</sup> ·h·°F.....79	
	W/m·°C.....11.4	
Electrical Resistivity,	ohm-circ mil/ft.....751	
	µohm-m.....1.25	

compressor and turbine blades are details of differing jet engines, so their parameter characteristics are differing too. Speed of springing stream  $V_{stream} = 256 \text{ m/s}$  over compressor blade is taken basing on known plane's flying speed. Temperature of this stream  $T_{stream} = -50 \text{ °C}$  applied by flying altitude. Blade's rotating speed equals to 78 rounds per second (rps), while in turbine same parameter equals to 165 rps. Taking into consideration both external (gas from set on fire fuel mixture) and internal (cool air) streams over the rotating turbine blade, two additional parameters are applied for calculation: MassFlow = 0.001kg/s and pressure of cooling stream instead of it's speed  $P_{stream} = 301.3 \text{ MPa}$ . Temperatures of inner and outside streams are  $20 \text{ °C}$  and  $600 \text{ °C}$  accordingly.

3. Stress-strain analysis

Performed task implied consideration of an external air and gas laminar streams and their influence over the rotating blades, as well as taking in account internal turbo-blades cooling by flowing channels inside them. Applied thermal condition and flow rate data was passed by the integrated module of CosmosWorks software. Besides that, the interaction between blades' allowance in the turbine and compressor has been examined applying European standard by three blades, fixed in the rotor one by one. The middle blade was under primary attention. After all finite element models had been obtained, Von Mises equivalent stress determination got under way. Used Von Mises equivalent stress formula is brang lower, where  $\tau$  is tangential strain in indicated planes:

$$\sigma_{VM} = \frac{1}{\sqrt{2}} \sqrt{(\sigma_x - \sigma_y)^2 + (\sigma_y - \sigma_z)^2 + (\sigma_z - \sigma_x)^2 + 6\tau_{yz}^2 + 6\tau_{zx}^2 + 6\tau_{xy}^2}$$

General analysis of compressor blade was concentrated on three blades combination model, while turbine blade was looked over as single object [8]. Non-damage variant of compressor blades acquiring proper conditions (flow rate, temperature, loads) was examined first. Expected main stress concentration, as well as maximum stress value for whole researching model due to great inertial forces appeared in the blades' bottom part, where blade's "wing" connects crown. That tendency was typical for all overlooked models.

The goal contained in material replacement influence over the stress value increase in object's volume, therefore were made results' gathering from the origin and replaced material part's border place.

Renewing side edge for 5mm,  $\sigma_{max} = 320$  Mpa result was exceeded, for 10mm  $\sigma_{max} = 485$  Mpa and for 15 mm  $\sigma_{max} = 638$  Mpa. From these integers, which were received from local plot, following dependence can be inferred:

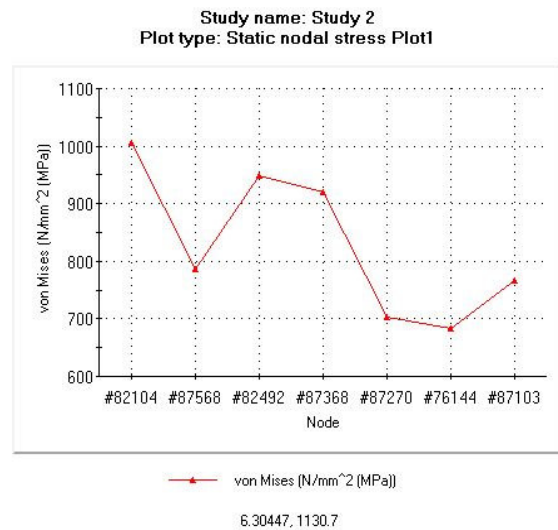
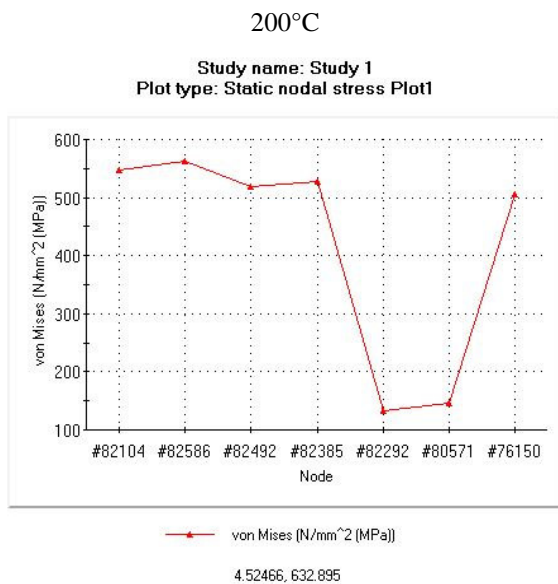
$$((\sigma_{max(i)} - \sigma_{max(i-1)})/\sigma_{max(i)}) \times 100\%,$$

when  $\sigma_{max(i)}$  is last made maximum stress calculation result, and  $\sigma_{max(i-1)}$  – previous maximum stress calculation result.  $i = 2, 3, 4, 5 \dots n$ . The first value  $\sigma_{max} = 179$  Mpa ( $i = 1$ ) was concluded by non-damage research. In proceeding  $\sigma_{max(2)} > \sigma_{max(1)}$  for 44 %,

$\sigma_{max(3)} > \sigma_{max(2)}$  for 34 %,  $\sigma_{max(4)} > \sigma_{max(3)}$  for 24 %.

With reference to turbine blade, all analysis results may be seen in figure below (Fig 4):

Note: upper row corresponds non-damaged variant, lower – damaged side edge(5mm) variant with putting on Inconel 718 alloy.



700°C

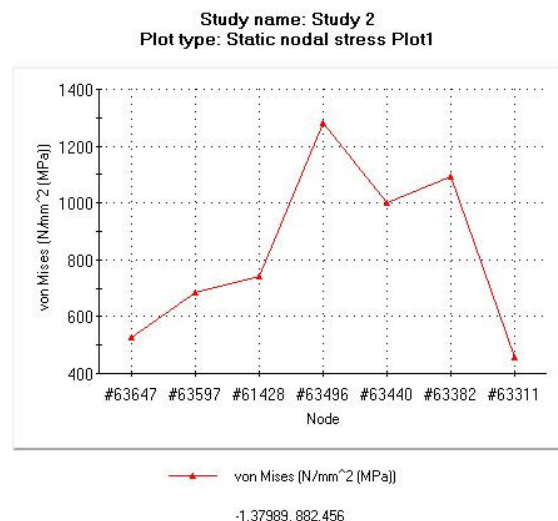
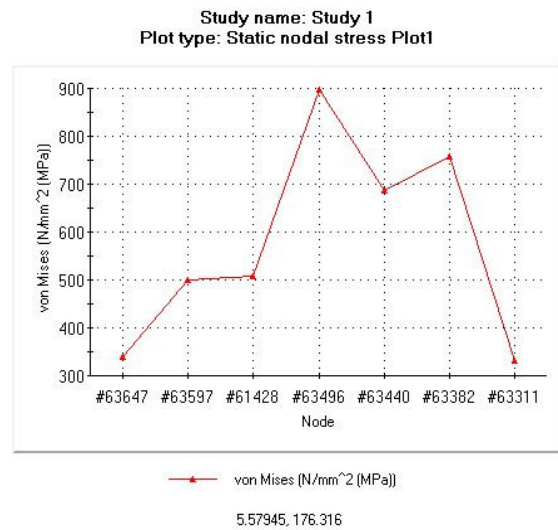


Fig 4. Stress analysis of turbine blade

## 4. Conclusions

So as to get optimal power output of jet engine, all compressor and turbine blades have to be trig and function properly. From the economical point of view, to renew damaged blades is much favourable than to replace them by new ones. This work's general aim was to compare differences between original and renewed objects' equivalent Von Mises stress – strain values, which appear in the blades at the same working conditions. From reached results following pattern can be concluded: as bigger damage is repaired and accordingly more alternate material (with bigger specific gravity and thermal ex-pansion) is placed in the object, as larger stress values are got in the result.

## Acknowledgement

The financial support of European Commission within the 6th Framework Program Strategic Targeted Research Project FANTASIA: Flexible and near-net-shape generative manufacturing chains and repair techniques for complex shaped aero engine parts – Contract No.: AST5-CT-2006-030855.

## References

1. COSMOS Works. Online User's Guide Structural Research and Analysis Corporation. USA, 2004.
2. Costa, M. Y. P.; Voorwald, H. J. C.; Pigatin, W.L. et al. 2006. Evaluation of shot peening on the fatigue strength of anodised Ti-6Al-4V Alloy. In *Material Research*, vol. 9, no. 1.
3. Drive, M. *Cad to metal arcam AB. Arcam Ti-6Al-4V Eli titanium alloy: extra low interstitials enhance material properties.*
4. Jayaraman, N.; Prevey, P.S.; Ravindranath, R. 2005. *Improved damage tolerance of Ti-6Al-4V aero engine blades and vanes using residual compression by design.*
5. Sakuma, A.; Matsuura, T.; Suzuki, T. et al. 2006. Upgrading and life extension technologies for geothermal steam turbines. In *JSME International Journal, Series B*, vol. 49, no 2.
6. Sakuma, A.; Takahashi, T.; Watanabe, O. et al. 2000. Upgrading and life extension technologies for geothermal steam turbines. In: *Proceedings of World Geothermal Congress, Kyushu - Tohoku, Japan, May 28 - June 10, 2000.*
7. Xu, C.; Chen, W. J. 2005. Computational analysis on a compressor blade. In: *Int. Conf. On Jets Wakes and Separated Flows, ICJWSF-2005, October 5-8, 2005, Toba-shi, Mie, Japan.*
8. Ивасишин, О. М.; Саввакин, Д. Г.; Бондарева, К. А. и др. 2005. *Производство титановых сплавов и деталей экономичным методом порошковой металлургии для широкомасштабного промышленного применения.*

## SUREMONTUOTOS DUJŲ TURBINOS IR KOMPRESORIAUS MENČIŲ ANALIZĖ

A. Tishkunov, S. Gluhihs, A. Korjakins, A. Popovs

### Santrauka

Šiame darbe aprašoma, kaip buvo atliekama suremontuotų turbinos ir kompresoriaus menčių atsparumo analizė. Svarbiausia buvo palyginti ekvivalentinių įtampų rezultatus iki ir po menčių renovavimo alternatyvia medžiaga. Modelių, kurie buvo suprojektuoti kompiuterine programa SolidWorks, medžiaga buvo keičiama tose darbinės mentės briaunos vietose, kur buvo galimi eksploataciniai defektai.

**Reikšminiai žodžiai:** turbinos mentė, kompresoriaus mentė, modeliavimas, srautai, vidinis vėdinimas, nuostolių simuliavimas, medžiagų pakitimas, Von Mises ekvivalentinis stresas, pajėgumas, eksperimentas, rezultatų palyginimas.